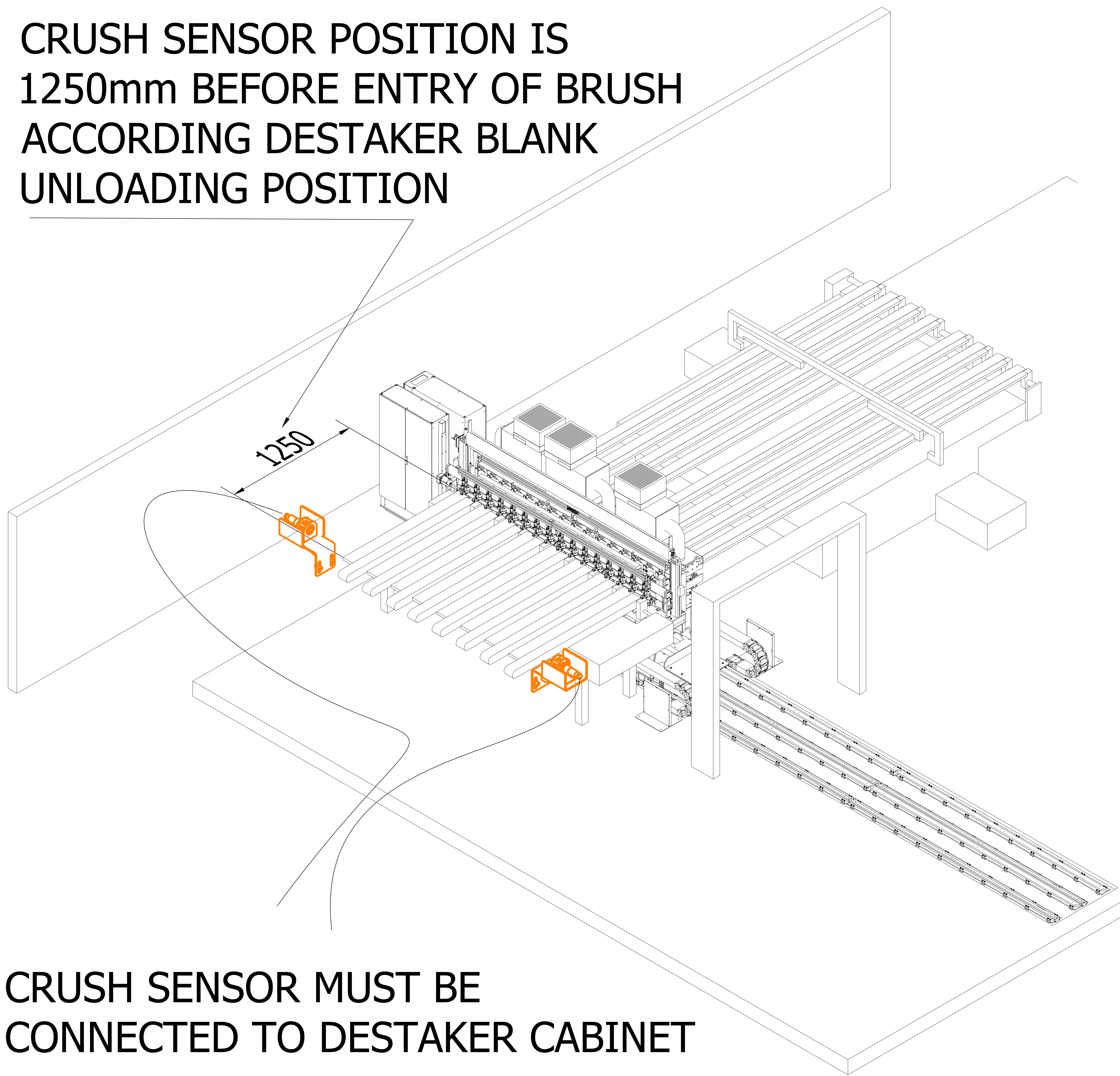
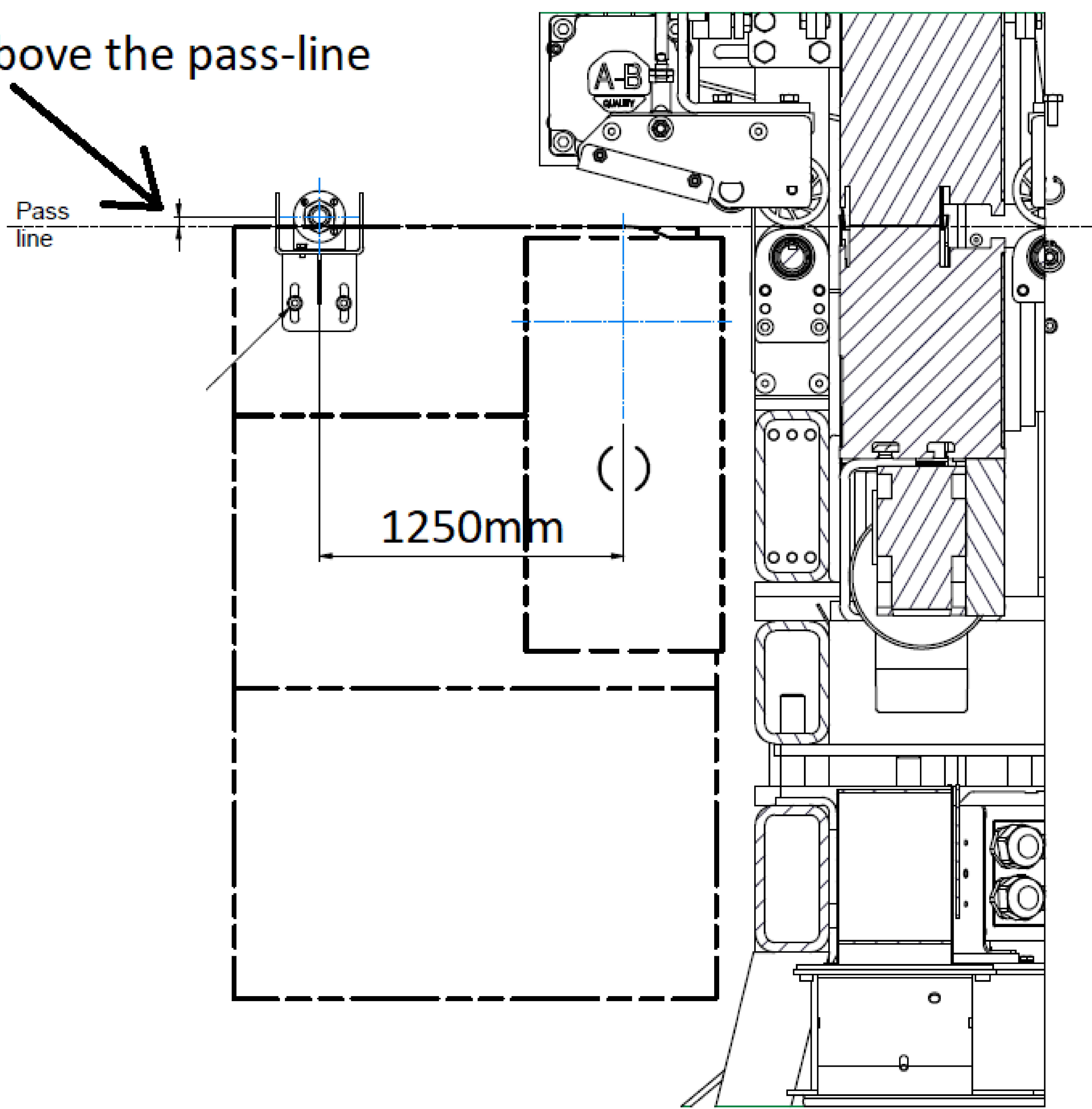


CRUSH SENSOR POSITION IS  
1250mm BEFORE ENTRY OF BRUSH  
ACCORDING DESTAKER BLANK  
UNLOADING POSITION




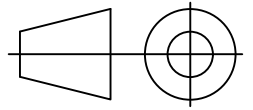
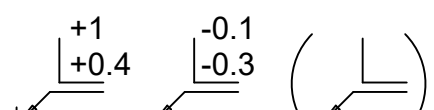
CRUSH SENSOR MUST BE  
CONNECTED TO DESTAKER CABINET

Install at 8mm above the pass-line



SENSOR AND BRAKET SUPPLIED  
BY DIETRONIC,  
INSTALLATION AT CUSTOMER  
CHARGE

ISO 2768-2 K												
Range	0-10	>10-30	>30-100	>100-300	>300-1000	>1000-3000	0-100	>100-300	>300-1000	>1000-3000		
Tolerance	0.05	0.1	0.2	0.4	0.6	0.8	0.4	0.6	0.8	1	0.2	
Default tolerance except material stock dimensions												
ISO 2768-1 m Linear							Radii and Chamfers			Angular Dimensions		
Range	>0.5-6	>6-30	>30-120	>120-400	>400-1000	>1000-2000	>0.5-3	>3-6	>6	0-10	>10-50	>50-120
Toler.	±0.1	±0.2	±0.3	±0.5	±0.8	±1.2	±0.2	±0.5	±1	±1°	±0.5°	±0.32°
											±0.16°	±0.08°

-	PRIMA EMISSIONE	Zoppetti	05/04/2022		
REV	Description	Designed	Date	Released	Date
 <b>DieTronic</b> lubricating technology	Raw material:	 FIRST ANGLE PROJ.	 ISO 13715	Weight	
	Surface treatment:			9660,069	
	Heat treatment:				
	Material	Scale 1 : 100	Sheet size A3	Sheet 1 / 1	
	Description Combi 4000 - Crush Sensor	Part number 2022856		Rev.	
This document contains CONFIDENTIAL proprietary information which shall NOT be used, reproduced, or disclosed without prior written approval of Dietronic s.r.l. Notice ISO 16016.					